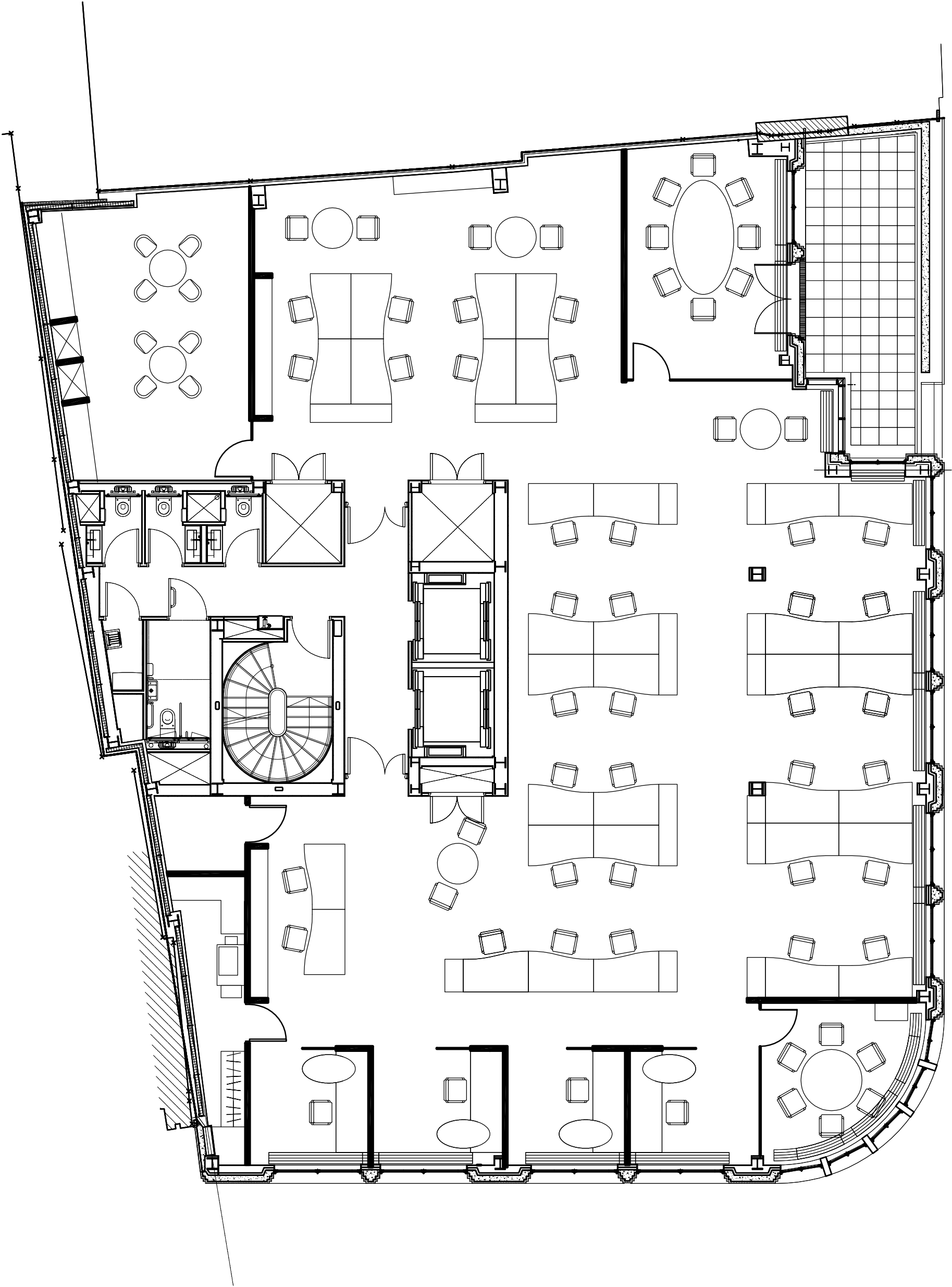


| Space Utilisation | Sq. M | Sq. Ft | % of NLA |
|-------------------|-------|--------|----------|
| Net Lettable area | 377   | 4057   |          |
|                   |       |        |          |
| Cellular          | 35    | 372    | 9        |
| No of persons     | 4     |        |          |
|                   |       |        |          |
| Open Plan         | 183   | 1970   | 49       |
| No of persons     | 33    |        |          |
|                   |       |        |          |
| Support           | 82    | 882    | 22       |
| Total Headcount   | 37    |        |          |
| Occupancy Ratio   | 1:10  | 1:110  |          |



50 St Mary Axe

Fourth Floor - Typical Corporate Layout